

Technical rider

**AI & Me**  
**multi-piece installation**

Produced by mots &  
Zauberberg Productions GmbH

**mots**

**ZAUBERBERG**  
PRODUCTIONS

'**AI & Me**' is a multi-piece installation that explores the interaction between artificial intelligence and human participants. It encourages contemplation about the relationship between humans and AI, particularly focusing on the themes of judgment, perception, and the human willingness to be analyzed by machines.

Central to this experience is '**The Confessional**,' a piece where participants are subject to AI's unfiltered analysis, receiving a unique blend of description, imagination, and advice from the machine's perspective.

Accompanying pieces like '**AI Ego**,' '**Siblings**,' '**Profiled by AI**' and '**Seen by AI**,' further expand this narrative, offering diverse, AI-generated interpretations of human identity and existence.

The installation not only challenges our comfort with technological judgment but also provokes thought on the broader implications of having AI in our lives.

For the installation to be impactful, 'The Confessional' should be exhibited at least with 'AI Ego,' 'Siblings' or both.

# The Confessional

## Short description:

'The Confessional' is a candid machine that delivers an opinion about participants based on their outward appearance, designed to provoke and challenge our relationship with artificial judgment.

It's a cubical construction where people can sit down while a camera observes them. The machine then forms an impression about the participants, based on the way they look. Whatever the machine thinks is then displayed on a retro CRT monitor for the participants to read.

Technically, the process involves a custom developed AI software that analyzes the participant's image, providing a physical description, a speculative personal narrative, and customized advice. The analysis takes place partially on the local computer, and partially in the cloud.

## Hardware components:

- 1x black cubical aluminium frame with a dark grey backdrop (cca. 2x2x2m / 6.56x6.56x6.56ft)
- 1x camera
- 1x 9" CRT monitor
- 1x black box that holds a computer
- 1x black box where participants can sit down
- 8x LED light tubes

## Space requirements:

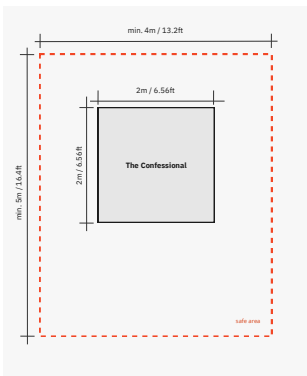
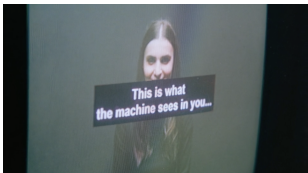
- dark room
- min. 4x5m (cca. 13.2x16.4ft) for the installation space (see diagram)
- to consider additional space for participants queuing, clearance around the cube and traffic management

## Technical requirements:

- power connection
- high speed internet connection for real-time AI processing, cable connection preferred

## Shipping notes:

- cca. 150kg
- cca. 7 boxes (max. length 1.5m)
- the aluminium frame and the dark grey backdrop will be disassembled for shipping



# AI Ego

## Short description:

'AI Ego' is a piece composed of a series of CRT monitors displaying the participants who enter 'The Confessional' in surreal and completely fabricated scenarios, imagined and generated by AI. This happens real-time, in just a few minutes after they exited 'The Confessional'.

This part of the installation extends the AI's interaction with participants beyond mere analysis of physical appearance, delving into the realm of creative speculation and imagination.

## Hardware components:

- 8-16x CRT monitors various sizes (e.g., Sony PVM-14L2 14-inch), with composite input\*
- 8x black or dark grey pedestals\*
- 3-6 LED light tubes
- media players
- power and network connectors

## Space requirements:

- dark room
- min. 4x5m (cca. 13.2x16.4ft) for pedestals setup, considering 8 CRT monitors

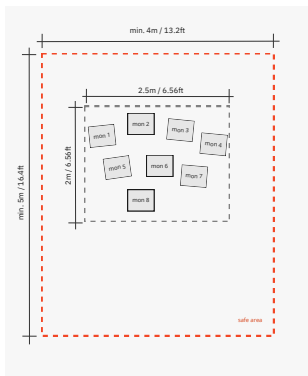
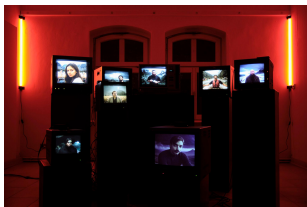
## Technical requirements:

- 'The Confessional'
- power connection
- high speed internet connection for real-time AI processing, cable connection preferred

## Shipping notes:

- cca. 30kg
- cca. 3 boxes (max. length 1.5m)
- excludes monitors and pedestal

\* Depending on location, either supplied by organizer or provided by mots (to be discussed)



# Siblings

## Short description:

'Siblings' is a virtual gathering of AI-generated humans on vibrant screens, with the purpose of questioning uniqueness and human significance in the age of deep fakes and AI replication.

A real-time AI model trained on the images of the participants who entered 'The Confessional' creates lookalikes that bare a striking resemblance with their real counterparts.

The 'Siblings' display emotions as their faces change in slow motion on the screens.

## Hardware components:

- multi-screen installation, for e.g.:
  - 4x 1x3m LED screens (@ 3.5mm pitch size),
  - or 1-4x high-lumen projectors\*
- video processor depending on display tech\*
- media players

## Space requirements:

- dark room
- to be discussed, depending on display tech

## Technical and staff requirements:

- 'The Confessional'
- power connection
- high speed internet connection for real-time AI processing, cable connection preferred
- display tech installation crew\*

## Shipping notes:

- cca. 10kg
- cca. 1 box (60x40x32cm)
- excludes components supplied by organizer

*\* Supplied by organizer (to be discussed)*



## Profiled by AI

### Short description:

'Profiled by AI' is a real-time display of the questions and answers generated by the AI as it profiles individuals who have sat in 'The Confessional'.

Placed in isolation from 'The Confessional', the piece aims to give participants and viewers a deeper understanding of how the machine is making judgments and forming impressions.

### Hardware components:

- 1x CRT Monitor with composite input (e.g., Sony Trinitron 20-inch)\*
- 1x black or dark grey pedestal\*
- media player

### Space requirements:

- dark room
- area for CRT monitor and pedestal, min. 1x1m (cca. 3.3x3.3 ft)

### Technical requirements:

- 'The Confessional'
- power connection
- high speed internet connection data retrieval, cable connection preferred

### Shipping notes:

- cca. 10kg
- cca. 1 box (60x40x32cm)
- excludes monitor and pedestal

*\* Depending on location, either supplied by organizer or provided by mots (to be discussed)*



# Seen by AI

## Short description:

'Seen by AI' is a piece that follows the profiling in 'The Confessional' and utilizes the gathered data to create a photo of the participant, based on how the machine imagines them.

In contrast to 'AI Ego', the algorithm aims to create an image that is as faithful to machine's judgement as possible, making the participant feel like they are the subject of one's observation.

## Components:

- 2x CRT Monitors with composite input (e.g., Sony Trinitron 20-inch)\*
- 1x black or dark grey pedestal\*
- media player

## Space requirements:

- dark room
- area for CRT monitor and pedestal, min. 1x1m (approx. 3.3x3.3ft)

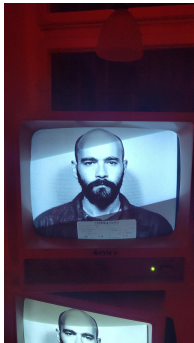
## Technical requirements:

- 'The Confessional'
- power connection
- high speed internet connection data retrieval, cable connection preferred

## Shipping notes:

- cca. 10kg
- cca. 1 box (60x40x32cm)
- excludes monitors and pedestal

\* Depending on location, either supplied by organizer or provided by mots (to be discussed)



Contact:

Daniela Nedovescu

1/2 of [mots](#)

mobile: +49-1522 5476675

email: daniela@mots.us

**mots**